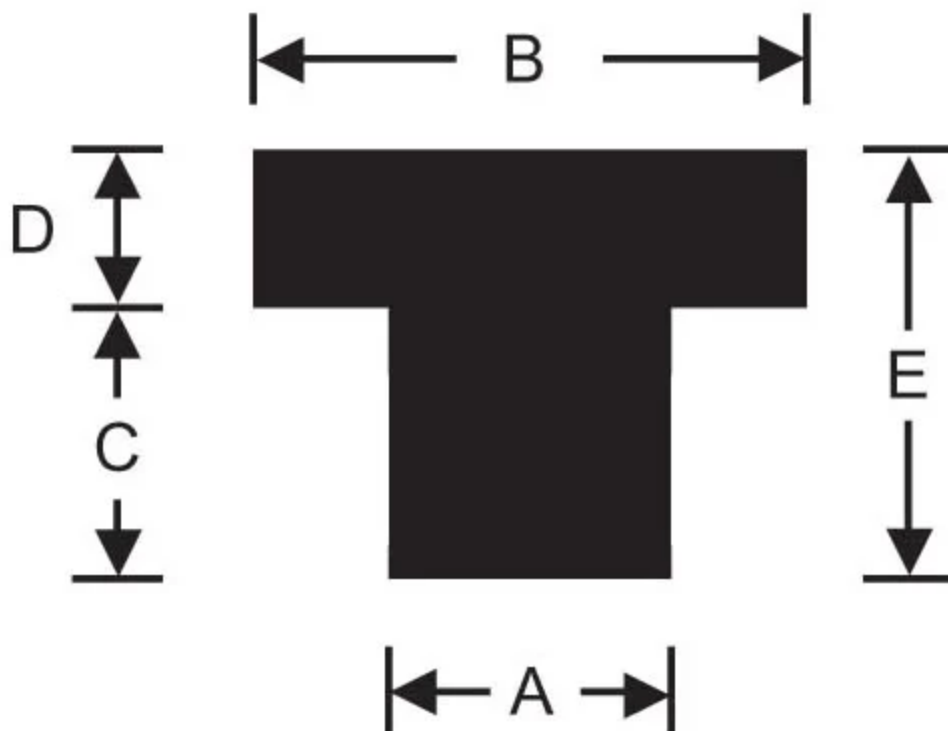


PB-0640-01

in Flat Top Bumpers



RPM's rubber recessed bumpers are used to protect doors or truck bodies from damage. They are also used as feet for large vibrating equipment.

us and see how we can help.

Specifications

TOTAL HEIGHT (E) (IN)	1/2
STEM DIAMETER (A) (IN)	29/64
HEAD DIAMETER (B) (IN)	41/64
STEM LENGTH (C) (IN)	25/64
HEAD HEIGHT (D) (IN)	7/64
OVERALL HEIGHT (E) (IN)	1/2
PRODUCT TYPE	Bumpers
MANUFACTURER	RPM Mechanical, Inc.