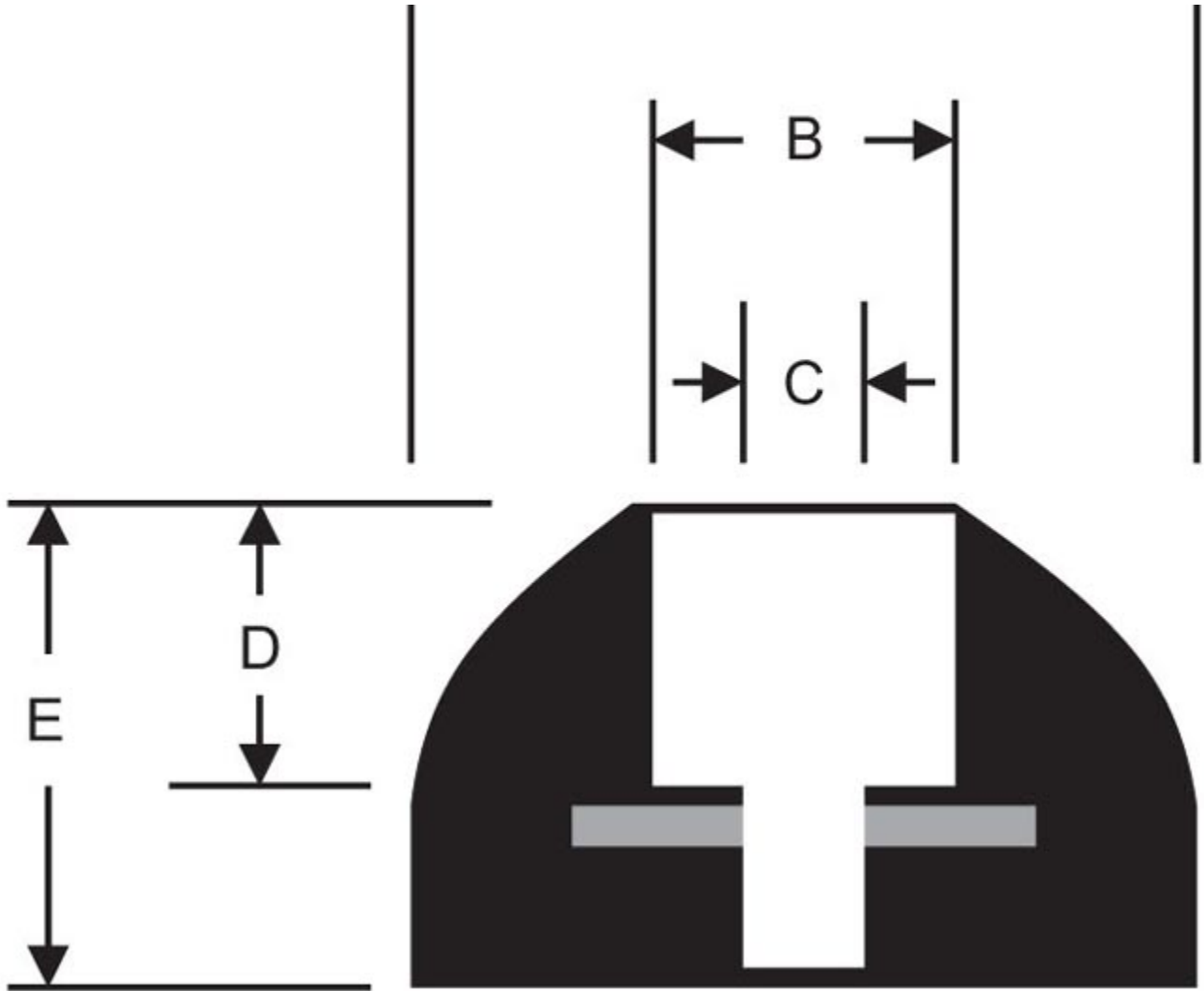


RBW-1000-05

in Rounded Top Recessed Bumpers





RPM's rubber recessed bumpers are used to protect doors or truck bodies from damage. They are also used as feet for large vibrating equipment.

RPM's rubber bumpers are a low cost way to provide a rubber break for many different applications. They provide a great way to protect and isolate any two surfaces. If you need a special size, contact us and see how we can help!

Specifications

| | |
|---------------------------|------|
| OUTSIDE DIAMETER (A) (IN) | 1 |
| RECESS DIAMETER (B) (IN) | 3/8 |
| BORE DIAMETER (C) (IN) | 3/16 |
| RECESS DEPTH (D) (IN) | 3/16 |
| TOTAL HEIGHT (E) (IN) | 7/16 |
| | |

| | |
|-------------|----------------------|
| INSERT TYPE | Steel Washer |
| OPTIONS | Without Steel Washer |