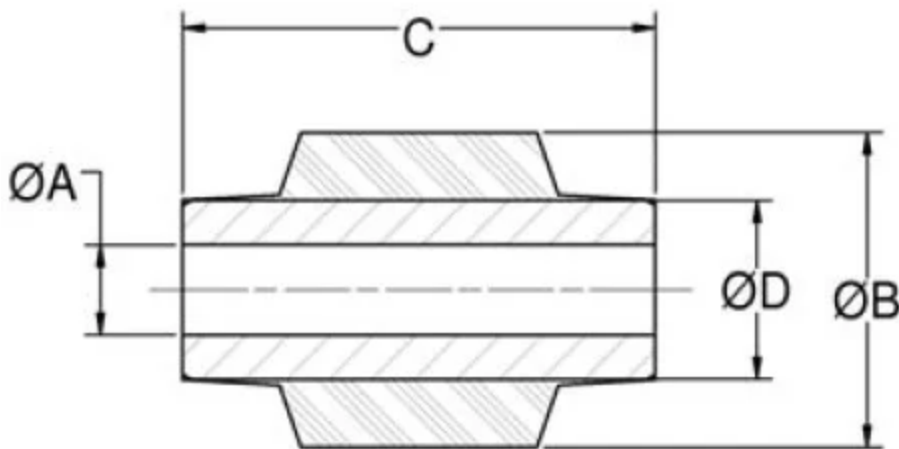


# J-6145

in Center Bonded Bushings



Center Bonded Bushings and Square Bonded Bushings are used in applications where the absorption shock, attenuation of noise, reduction of wear and elimination of lubrication is required. Center Bonded Bushings are designed to be loaded radially and utilize a soft torsional spring rate to provide freedom in rotation. High radial restraint maintains the alignment between joined parts. They are not intended for use where extreme rotational motion will occur. Typical applications include heavy duty highway equipment, drilling equipment, harvesters, combines and industrial machinery.

Square Center Bonded Bushings accommodate angular movement and isolate vibratory disturbances in heavy equipment. These bushings combine a torsional spring with an elastomeric pivot and isolator. They provide positive torsional positioning and pivot action under the most demanding operating conditions. Typical applications include wheel suspensions, vibratory feeders, mobile power equipment and vibratory cable layers.

Easy to install, the uncomplicated designs of the Center Bonded and Square Bonded Bushings provide initial economy, while the rugged elastomers and high strength bonding assure extended service life.

- Easy to install.

- Minimal maintenance due to specially compounded elastomer.

## Specifications

A (IN)	2.008
B (IN)	4.19
C (IN)	6
D (IN)	3.25
DIAMETER (IN)	4
ITEM NAME	Bushings without Outer Member
RADIAL STATIC SPRING RATE (LBS/IN)	312000
RADIAL STATIC SPRING RATE (N/MM)	54631
MAX. RADIAL STATIC LOAD RATING (LBS)	8200
MAX. RADIAL STATIC LOAD RATING (N)	36475
SPRING RATE RADIAL (K RAD) (LBS/IN)	312000
SPRING RATE RADIAL (K RAD) (N/MM)	54631
LENGTH (IN)	4
LENGTH (MM)	101.6
PRODUCT TYPE	
MANUFACTURER	
SPRING RATE TORSIONAL LBΣIN/° (IN)	796
SPRING RATE TORSIONAL LBΣIN/° (MM)	139.4