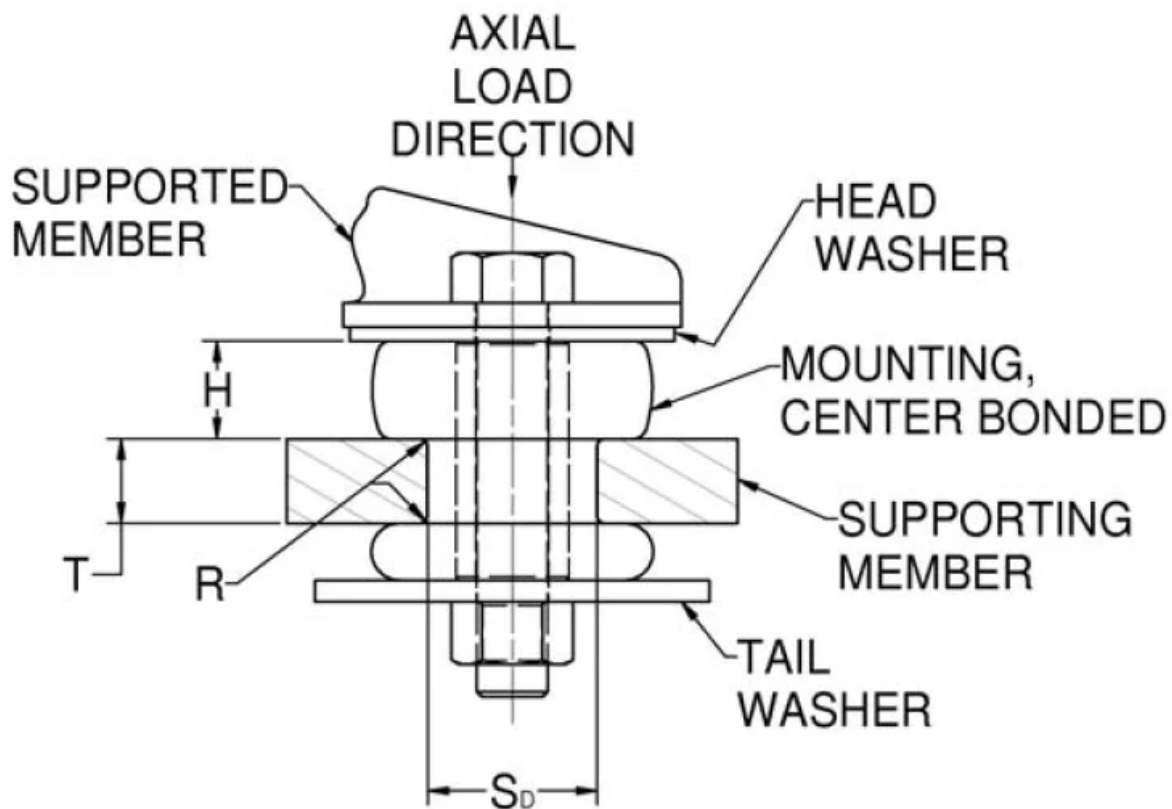
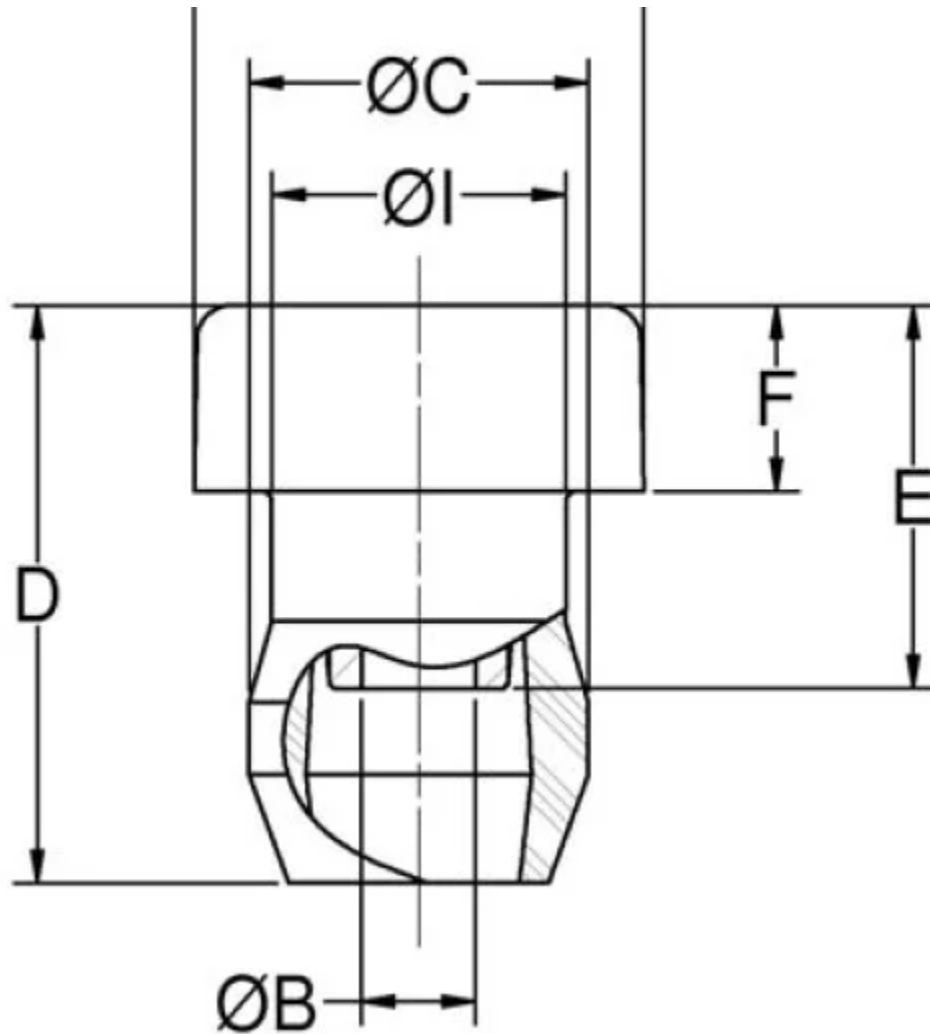


CB-1180-2

in Center Bonded Mounts - CB-1180 Series

Installation View (Shown Under No Load)





Center Bonded Mounts isolate vibration, control shock and reduce noise due to structure borne vibrations.

Available in a full range of rated load capacities and able to withstand shock loads of 10 g's, these mounts effectively protect equipment and improve operator comfort. They are ideal for automotive, marine, railroad and industrial markets.

Center Bonded Mounts provide flexible suspension systems for mobile, transport-mounted or portable equipment. Typical applications include engines, cabs, fuel tanks, pumps, air conditioning units, compressors and industrial machinery.

These ratings are for general industrial applications. For on-highway use 80% of loads shown. Bar off-highway use 70% of loads shown.

- Vibration isolation in all directions.
- Noise attenuation.
- Easy installation because of one-piece design.
- Low-cost installation.
- Long service life.

bottoming.

- Standard sizes available from stock.
- Space-saving size.
- Captive installation after overload failure when recommended bolt, washer and nut are used.
- Accommodate English and Metric bolts.

Center Bonded Mounts isolate vibration, control shock and reduce noise due to structure borne vibrations.

Available in a full range of rated load capacities and able to withstand shock loads of 10 g's, these mounts effectively protect equipment and improve operator comfort. They are ideal for automotive, marine, railroad and industrial markets.

Center Bonded Mounts provide flexible suspension systems for mobile, transport-mounted or portable equipment. Typical applications include engines, cabs, fuel tanks, pumps, air conditioning units, compressors and industrial machinery.

Specifications

A (IN)	2.5
B (IN)	0.64
C (IN)	1.87
D (IN)	3.2
E (IN)	2.12
F (IN)	1.01
F (MM)	25.7
H (IN)	
H (MM)	
I (IN)	1.625
I (MM)	41.3
MAX AXIAL DEFLECTION (IN)	0.156

RECOMMENDED BOLT SIZE (IN)	5/8
THICKNESS (IN)	0.19
THICKNESS (MM)	4.8
MAX. AXIAL STATIC LOAD RATING (LBS)	700
MAX. AXIAL STATIC LOAD RATING (N)	3115
PRODUCT TYPE	Mounts
MANUFACTURER	Lord Corporation
SERIES	CB-1180
R (IN)	0.075
R (MM)	1.9
RECOMMENDED BOLT GRADE OR CLASS (SAE J429)	8
RECOMMENDED BOLT GRADE OR CLASS (SAE J1199)	10.9
SD (IN)	1.5
SD (MM)	38.1
T (IN)	0.75
T (MM)	19.1
I.D. (IN)	0.64
I.D. (MM)	16.3
RECOMMENDED STEEL WASHER	J-2049-70
O.D. (IN)	
O.D. (MM)	
Frequently, vibration isolation	

APPLICATION ENGINEERING ASSISTANCE

specialized programs, for analyzing engine/ transmission combinations. The output from this analysis is a mounting proposal which optimizes performance over the complete range of operating speeds. This service is available to you upon request.