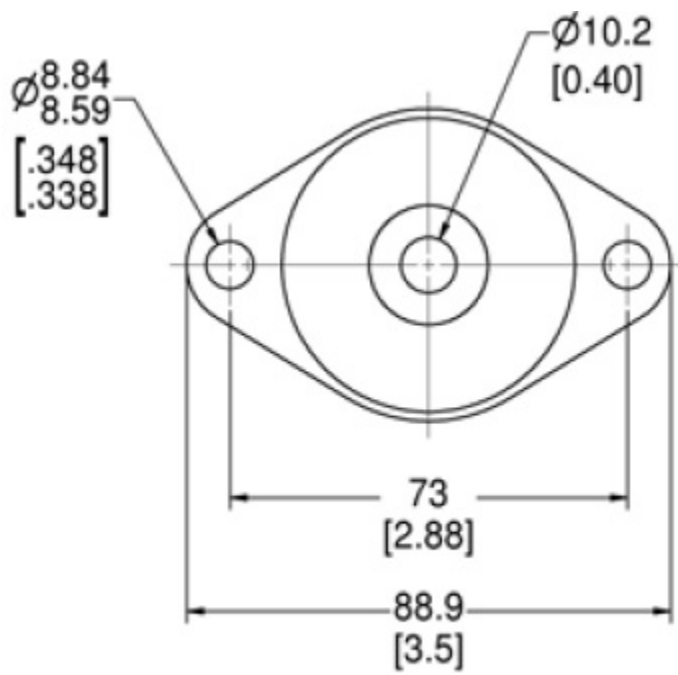
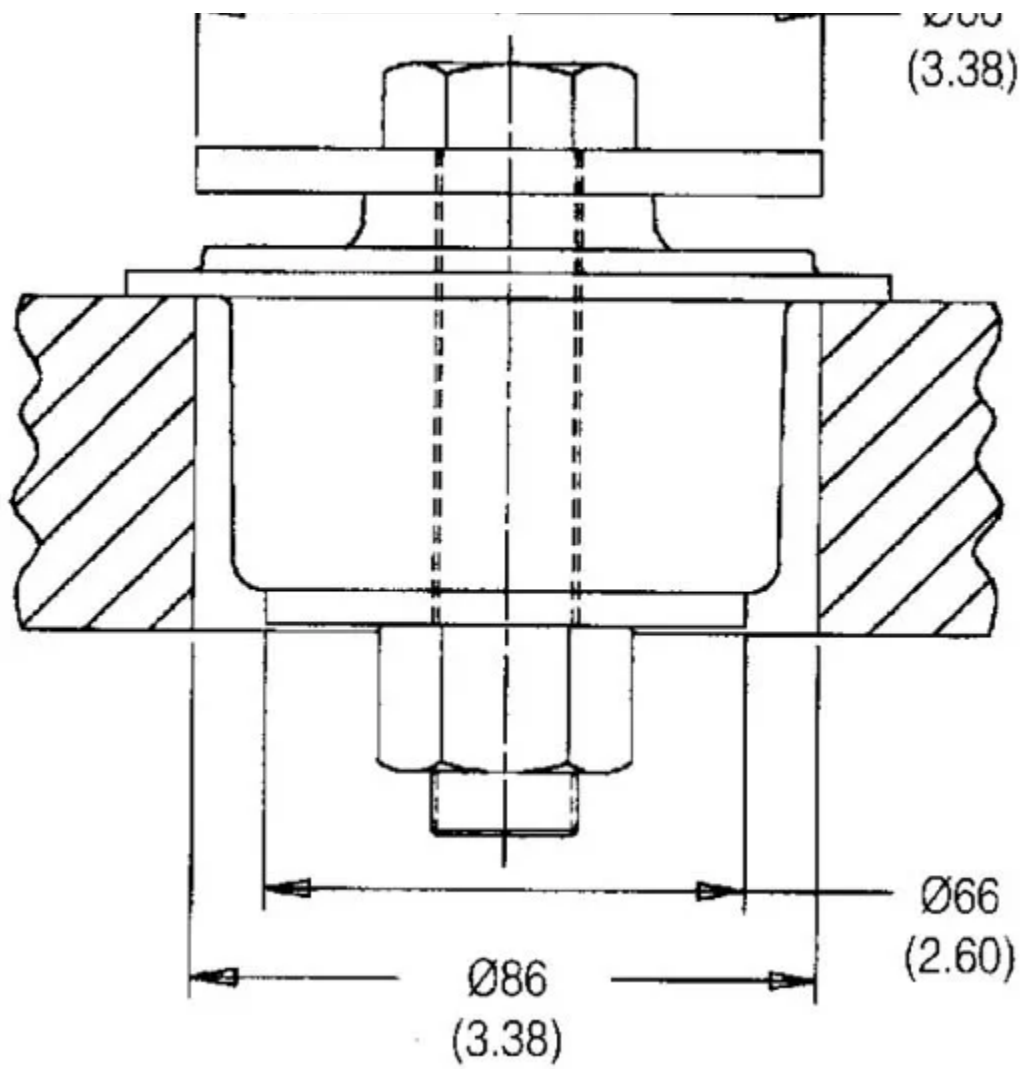


# J-21212-3

in Conical Mounts





more demanding vibration and noise reduction requirements, Lord integrates conical mounts with surface-effect technology to form an advanced control solution known as Hystec™ Systems.

Conical mounts are appropriate for both on-road and off-road vehicles. Applications include cab mounts and engine and transmission mounts for trucks and buses, and construction and agricultural vehicles.

Other parts available in this series.

The Mounts :

- Provide strong, dependable performance.
- Have a typical static deflection of 5mm.
- Offer a choice of radial stiffnesses.
- Can be snubbed.
- Can be safetied with the use of snubbing washers.
- Withstand R.O.P.S. loads with the addition of support rings.
- Are easily installed.
- Exhibit long, highly reliable service life.

Conical mounts provide effective vibration isolation and noise attenuation with a simple, robust mount design.

Consistent performance, high load bearing capabilities and a choice of radial stiffness characteristics are key features of these mounts. For more demanding vibration and noise reduction requirements, LORD integrates conical mounts with surface-effect technology to form an advanced control solution known as Hystec™ Systems.

Conical mounts are appropriate for both on-road and off-road vehicles. Applications include cab mounts and engine and transmission mounts for trucks and buses, and construction and agricultural vehicles.

## Specifications

RATED AXIAL STATIC LOAD (LBS)	180
RATED AXIAL STATIC LOAD (N)	800
RATED AXIAL STATIC DEFLECTION (IN)	0.142
RATED AXIAL STATIC DEFLECTION (MM)	3.6
AXIAL STATIC STIFFNESS (LBS/IN)	1040

AXIAL DYN STIFFNESS (N/MM)	182
RADIAL R1 STATIC STIFFNESS (LBS/IN)	2210
RADIAL R1 STATIC STIFFNESS (N/MM)	387
ITEM NAME	
MAX AXIAL LOAD RATING (LBS)	180
MAX AXIAL LOAD RATING (N)	800
MAX AXIAL DEFLECTION (IN)	0.142
MAX AXIAL DEFLECTION (MM)	3.6
RECOMMENDED BOLT SIZE (IN)	3/8
PRODUCT TYPE	Mounts
MANUFACTURER	LORD Corporation
RATED R2 STATIC STIFFNESS (LBS/IN)	2210
RATED R2 STATIC STIFFNESS (N/MM)	387