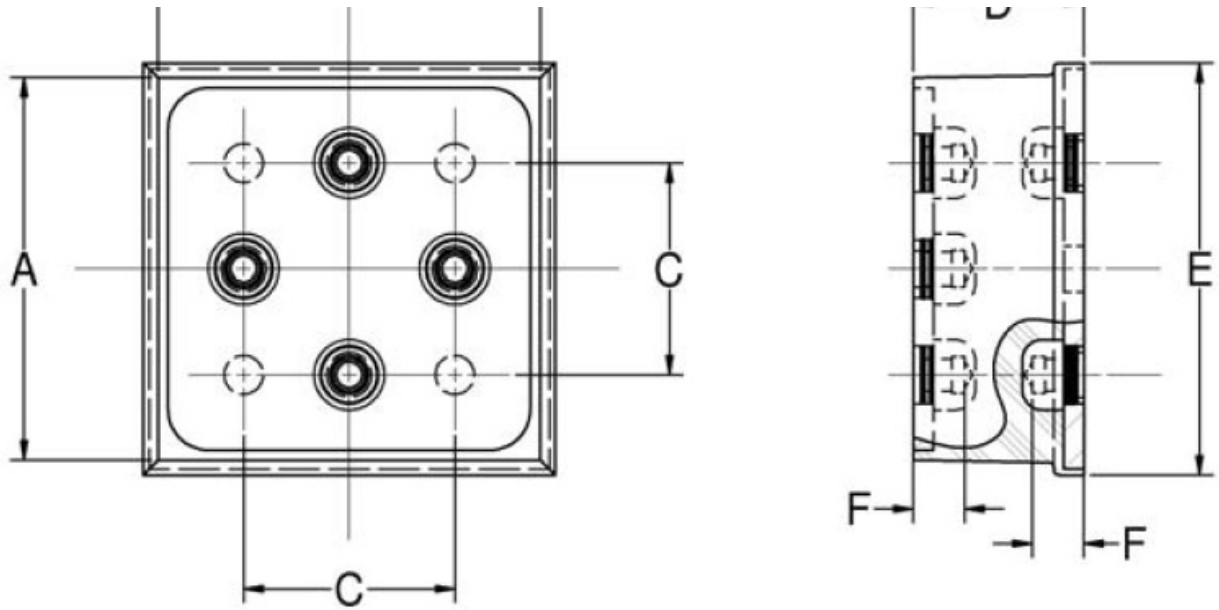


J-5130-1

in Square Pad Mount





- Economical.
- Compact and lightweight.
- Easy to install.
- Maintenance-free.
- Three size groups: small, medium and large.
- Unitized construction.

Specifications

COMPRESSION STATIC LOAD (LBS)	4130
COMPRESSION STATIC LOAD (N)	18371
COMPRESSION - SPRING RATE KC (LBS/IN)	17300
COMPRESSION - SPRING RATE KC (N/MM)	3030
SHEAR STATIC LOAD (LBS)	550
SHEAR STATIC LOAD (N)	2447
SHEAR - SPRING RATE KS (LBS/IN)	2000
SHEAR - SPRING RATE KS (N/MM)	350

B (IN)	4.75
C (IN)	2.62
D (IN)	2.12
THREAD SIZE	1/2-20 UNC
E (IN)	5.12
F (IN)	0.53
F (MM)	13.5
ELASTOMER	Oil Resistant Elastomer - Neoprene
G (IN)	
G (MM)	
PRODUCT TYPE	Mounts
MANUFACTURER	Lord Corporation
TYPE	4L
GRADE PER SAE J429	2
FLANGE THICKNESS (IN)	
FLANGE THICKNESS (MM)	