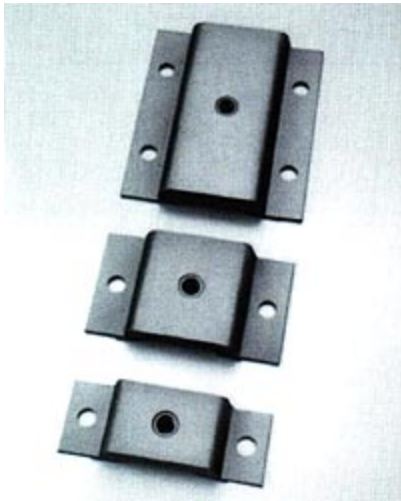
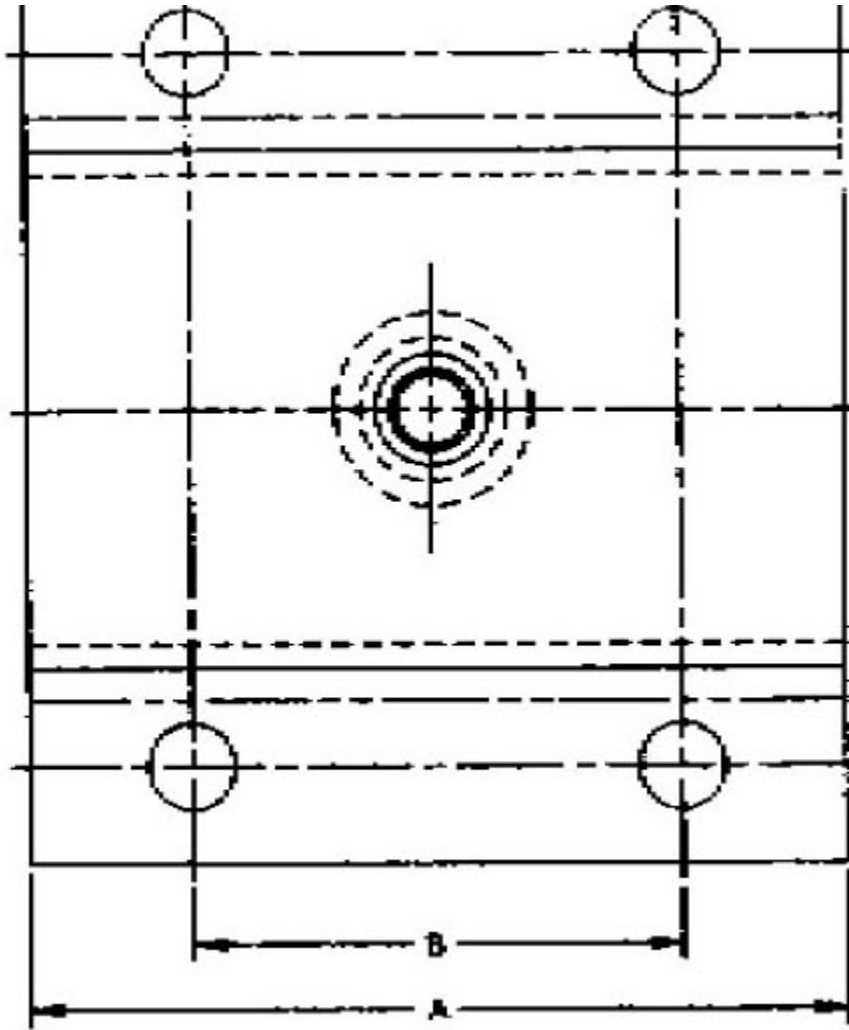


# J-2866-1

in Industrial Shock Mounts





Lord Machinery Mounts are designed to support heavy equipment and isolate intermittent or continuous vibration.

The result is greater machine accuracy, longer service life, smoother operation and reduced maintenance.

These mounts are available in four types to suit different needs.

Industrial Shockmounts efficiently control shock and structural noise transmission from heavy industrial machinery.

Adjacent controls, sensitive instruments and precision machines are protected from impact disturbances which could hamper their performance.

Worker comfort is increased, and building structures need less maintenance.

- High-efficiency, multi-directional isolation of low frequency vibration.
- Extremely rugged and require no maintenance.
- Easily installed.
- Long service life.

## Specifications

B (IN)	4
D (IN)	1.19
E (IN)	
F (IN)	5.5
F (MM)	139.7
MATERIAL	Neoprene Elastomer
G (IN)	7
G (MM)	177.8
MAX AXIAL LOAD RATING (LBS)	3000 to 7500
MAX AXIAL LOAD RATING (N)	13345 to 33362
MAX AXIAL DEFLECTION (IN)	0.3
MAX AXIAL DEFLECTION (MM)	0.762
PRODUCT TYPE	Mounts
MANUFACTURER	Lord Corporation
TYPE	2
DIAMETER (C) (IN)	0.656
DIAMETER (C) (MM)	16.7