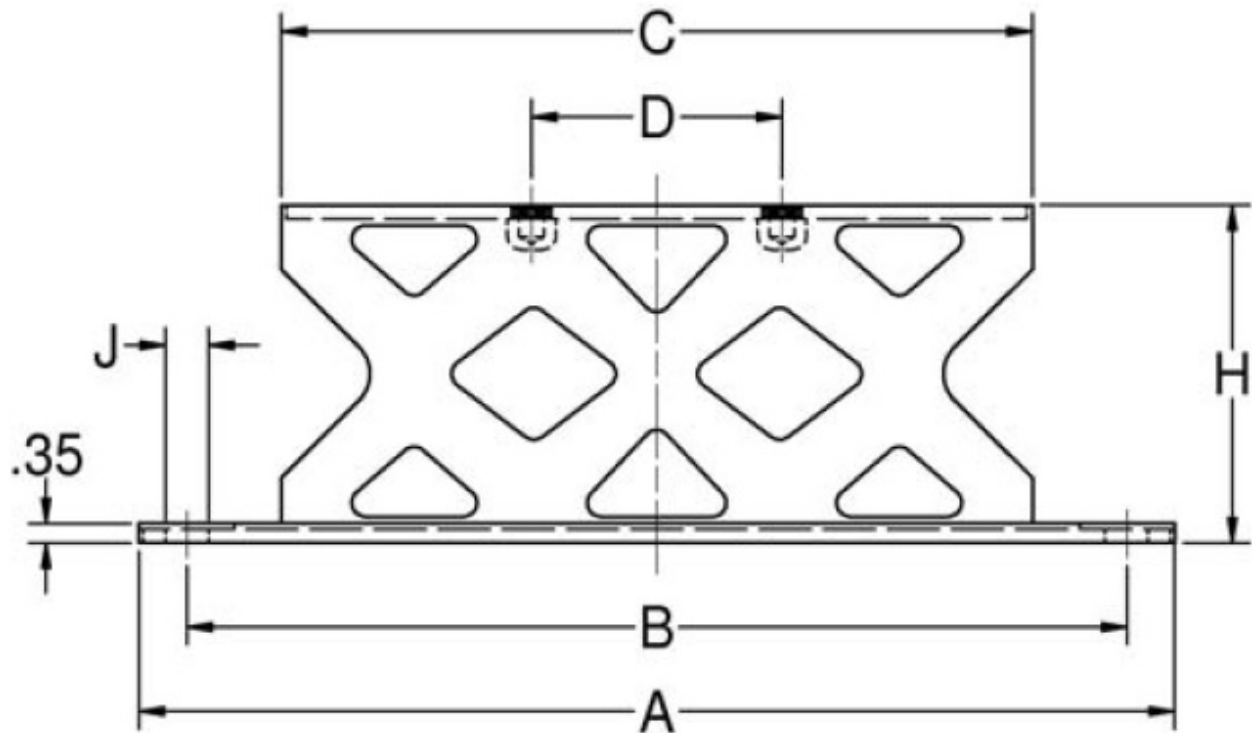
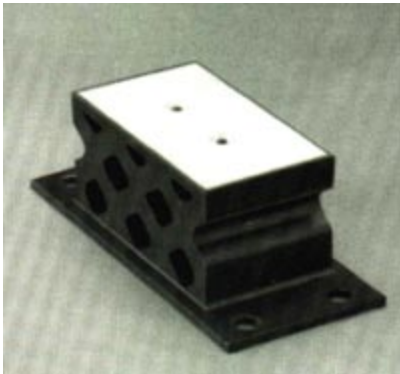
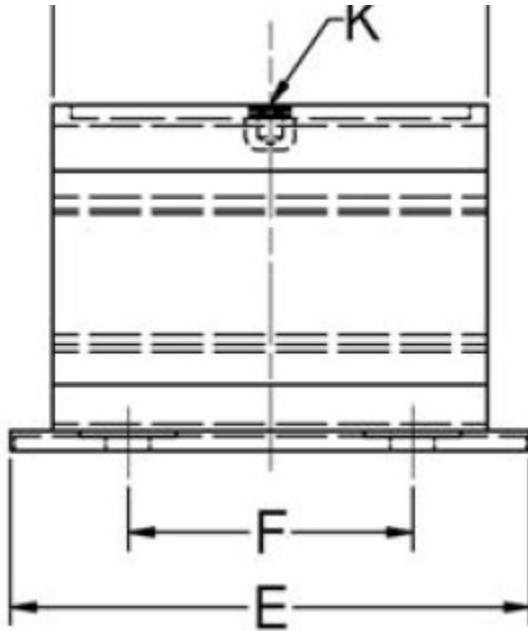


J-5665-34

in Lattice Mount





Lord Machinery Mounts are designed to support heavy equipment and isolate intermittent or continuous vibration.

The result is greater machine accuracy, longer service life, smoother operation and reduced maintenance.

These mounts are available in four types to suit different needs.

Lattice Mounts are recommended for applications where disturbing frequencies are as low as 6 Hz. Their lattice design provides a soft vertical spring rate combined with lateral stability.

Typical applications include shakerscreens, sifters, rubber mills, air compressors and large engines/generators.

- High-efficiency, multi-directional isolation of low frequency vibration.
- Extremely rugged and require no maintenance.
- Easily installed.
- Long service life.

Specifications

| | |
|--------|-------|
| A (IN) | 18.6 |
| B (IN) | 16.88 |
| C (IN) | 13.5 |
| D (IN) | 4.5 |
| E (IN) | 9.14 |

| | |
|-----------------------------|------------------|
| F (MM) | 127 |
| H (IN) | |
| H (MM) | |
| WEIGHT (LBS/FT) | 26.5 |
| WEIGHT (KG) | 12 |
| G (IN) | 7.62 |
| G (MM) | 193.5 |
| MAX AXIAL LOAD RATING (LBS) | 4000 |
| MAX AXIAL LOAD RATING (N) | 17793 |
| MAX AXIAL DEFLECTION (IN) | 1 |
| MAX AXIAL DEFLECTION (MM) | 25.4 |
| J (IN) | 0.76 |
| J (MM) | 19.3 |
| K (IN) | |
| K (MM) | |
| PRODUCT TYPE | Mounts |
| MANUFACTURER | Lord Corporation |
| TYPE | I |