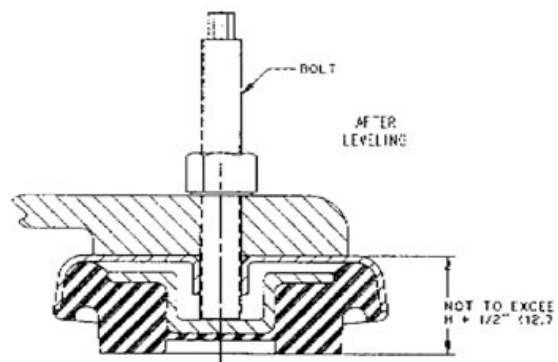
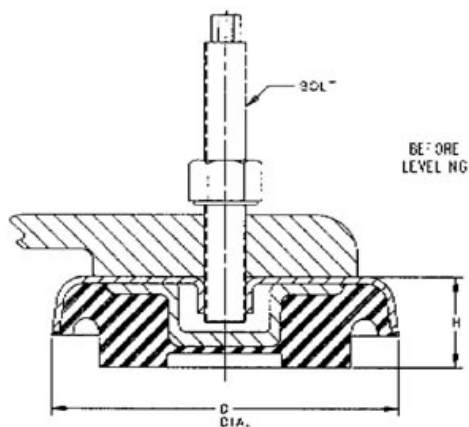
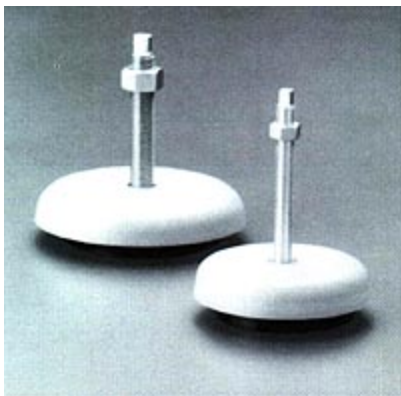


# J-16462-7

in Leveling Mounts



Lord Machinery Mounts are designed to support heavy equipment and isolate intermittent or continuous vibration.

The result is greater machine accuracy, longer service life, smoother operation and reduced maintenance.

These mounts are available in four types to suit different needs.

Leveling Mounts provide the ability to level equipment and machinery.

These mounts offer a vertical natural frequency under maximum load of 12 Hz. They are constructed of a neoprene elastomer, which resists oil, ozone and caustic materials, and a high-visibility yellow housing made of high strength steel.

Maximum adjustment is 1/2" (12.7mm).

Do not exceed this amount.

- High-efficiency, multi-directional isolation of low frequency vibration.
- Extremely rugged and require no maintenance.
- Easily installed.
- Long service life.

## Specifications

D (IN)	6 1/4
H (IN)	1 5/8
H (MM)	41.3
HEIGHT (IN)	1 5/8
MATERIAL	Stainless Steel
WEIGHT (LBS/FT)	2.3
WEIGHT (KG)	5.0
MAX AXIAL LOAD RATING (LBS)	4500
MAX AXIAL LOAD RATING (N)	20017
ADJUSTING BOLT (MM)	127
PRODUCT TYPE	Mounts
MANUFACTURER	Lord Corporation
FREQUENCY	12
BOLT DIAMETER	3/4
BOLT THREAD SIZE	10UNC x 5"



Before installing, be sure the mounts are the right ones for your machine.  
 1. Remove adjusting bolt and lock nut from mount.

## INSTALLATION

3. Insert adjusting bolt through clearance hole in foot and engage threads in mount.

4. Lower machine onto mounts.

5. Turn bolt until it bottoms.

To Level :

6. Level machine by turning the adjusting bolt.

7. Tighten lock nut against machine base.

Important :- Maximum adjustment is 1/2 in (12.7 mm). Do not exceed this amount. If additional height is required, use blocks or shims.