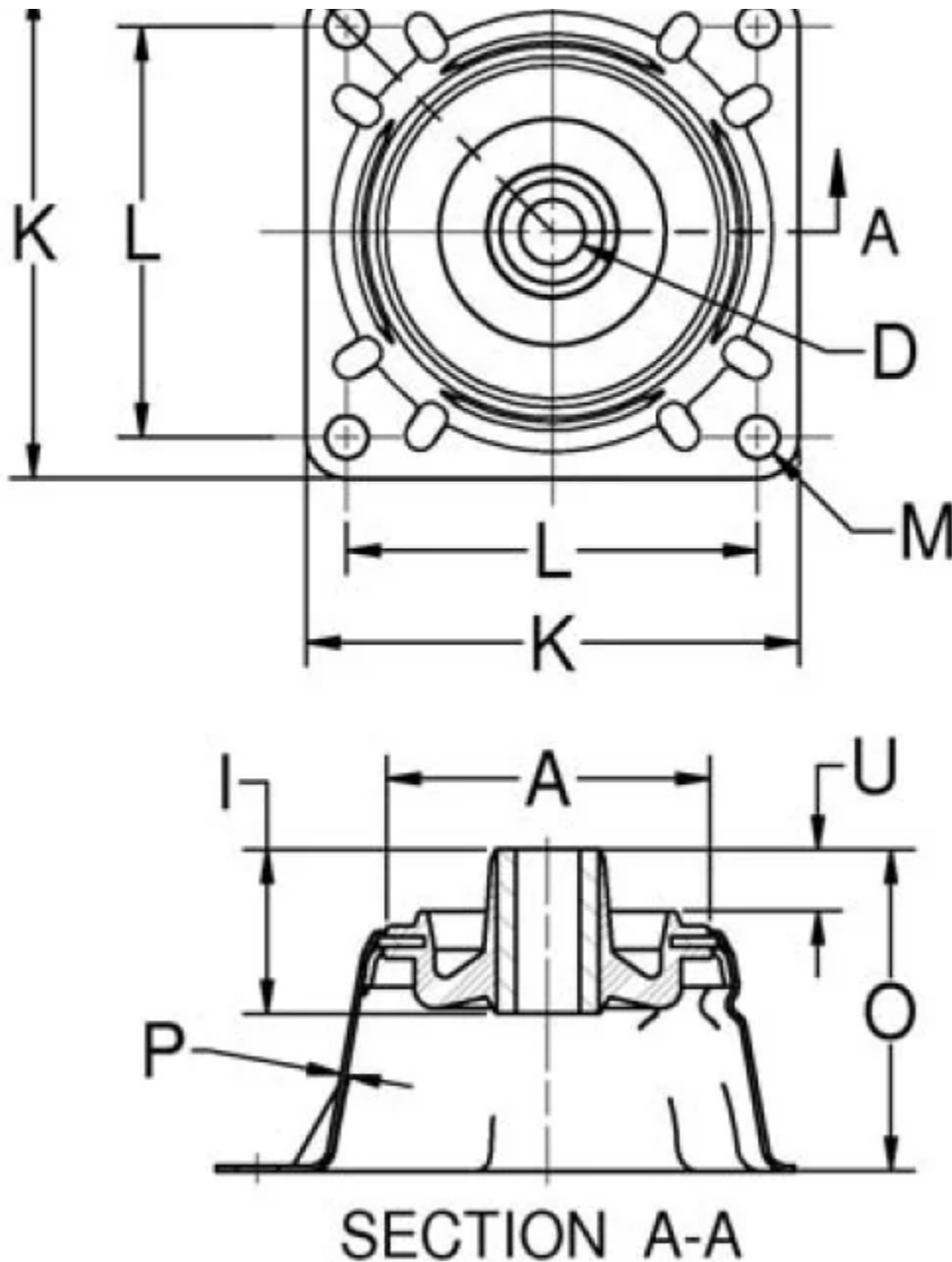


# 156PH-13

in Multiplane Mounts (Holder)



Lord Platform Mounts provide effective isolation against vibration. The contour of the flexing element was developed to provide uniform stress distribution. This, plus high strength bonding and the use of specially compounded elastomers, provides maximum service life.

These versatile mounts are available in three types, each type featuring square, diamond or holder configurations to suit a variety of design requirements. The three types, Platform Mounts, Heavy-Duty Platform Mounts and Multiplane Mounts, offer a range in load ratings from 0.5 to 600 pounds.

Snubbing washers provide an interlocking system of metal parts which act to prevent damage from overload or excessive shock impact.

Lord Platform Mounts are easy to install and provide space efficiency. Typical applications include electronic equipment, business machines, medical equipment and small pumps, engines and gen sets.

Non-Stock Item

- Load ratings from 0.5 to 600 pounds per mount.
- Uniform stress distribution.
- Easy to install.

## Specifications

A (IN)	1.5
B (IN)	1.75
C (IN)	1.375
D (IN)	0.257
E (IN)	0.166
F (IN)	0.05
F (MM)	1.3
L (IN)	
L (MM)	
MATERIAL	Steel
INSIDE DIAMETER (IN)	0.26
MAX. AXIAL RATED LOAD @ 1/16 IN (1.58 MM) DEFLECTION (LBS)	13
MAX. AXIAL RATED LOAD @ 1/16 IN (1.58 MM) DEFLECTION (N)	58
AXIAL STATIC SPRING RATE (LBS/IN)	69
AXIAL STATIC SPRING RATE (N/MM)	12.1
G (IN)	0.6
G (MM)	15.2
I (IN)	0.97

O (MM)	46
Q (IN)	1.945
Q (MM)	49.4
MAX AXIAL LOAD RATING (LBS)	13
MAX AXIAL LOAD RATING (N)	58
THICKNESS (IN)	0.05
THICKNESS (MM)	1.3
K (IN)	2.38
K (MM)	60.5
PRODUCT TYPE	Mounts
MANUFACTURER	Lord Corporation
SERIES	156
ENCLOSURE SHAPE	Holder
M (IN)	0.196
M (MM)	5
P (IN)	0.032
P (MM)	0.8
R (IN)	0.88
R (MM)	22.4
S (IN)	2.32
S (MM)	58.9
U (IN)	0.42
U (MM)	10.7

OUTSIDE DIAMETER (MM)	35.1
RECOMMENDED STEEL WASHER	J-2049-2