

J-20922-21

in Small Industrial Engine Mounts



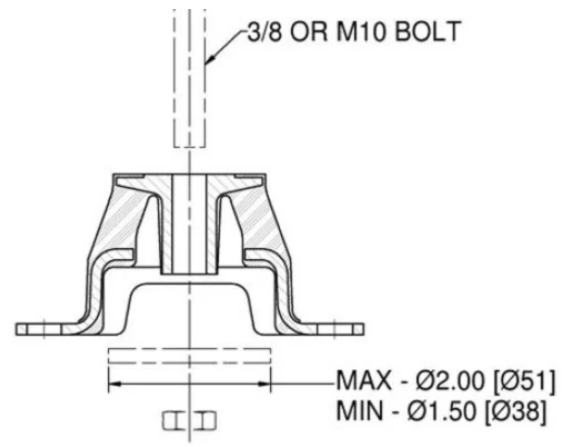
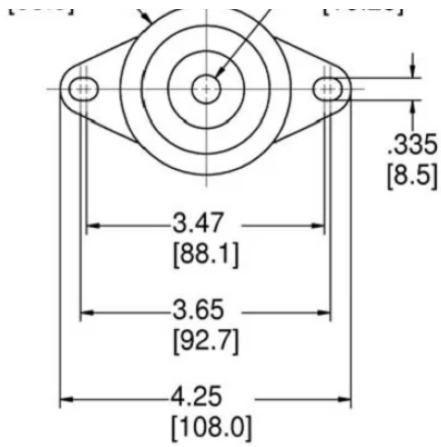
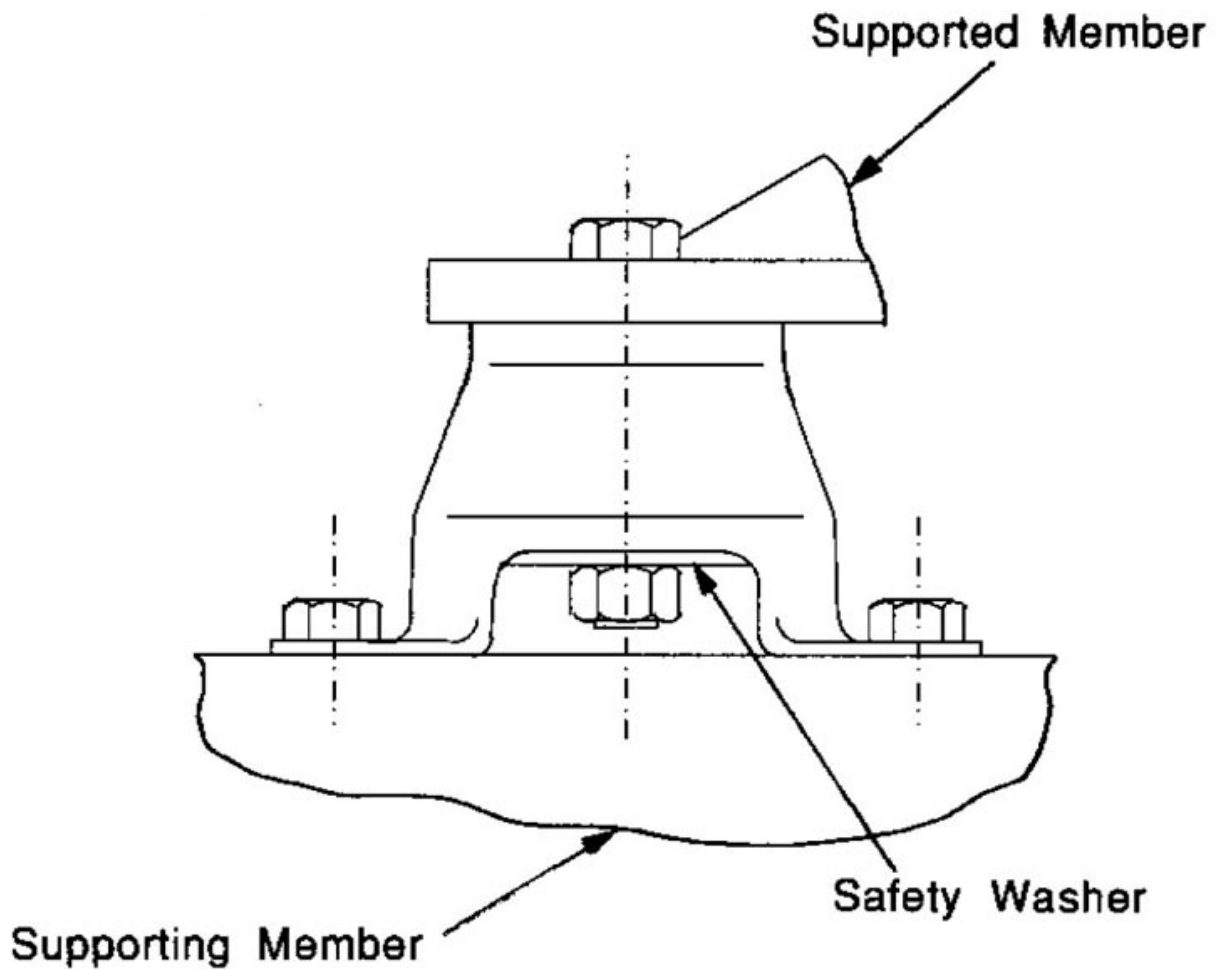
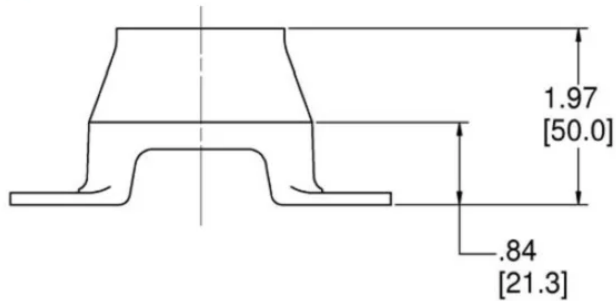


Figure 4 – Dimensions



- Moderately soft vertical stiffness.

- Inter-locked metals (when assembled with washer) provide safety restraint.
- Well-suited for low mounting locations.
- 120 - 300 lb. load ratings.

Lord Corporation's J-20922 series of small engine mounts are especially designed for mounting 2, 3 and 4-cylinder gas or diesel engines in various types of vehicles and equipment.

Specifications

COLOR	Red
AXIAL STATIC SPRING RATE (LBS/IN)	1200
AXIAL STATIC SPRING RATE (N/MM)	210
MAX. AXIAL STATIC LOAD RATING AT 0.1 IN (2.5 MM) DEFLECTION (IN)	120
MAX. AXIAL STATIC LOAD RATING AT 0.1 IN (2.5 MM) DEFLECTION (MM)	534
AXIAL SPRING RATES (LBS/IN)	1200
AXIAL SPRING RATES (N/MM)	210
LATERAL SPRING RATES (LBS/IN)	200
LATERAL SPRING RATES (N/MM)	35
COLOR CODE	Red
MAX AXIAL LOAD RATING (LBS)	120
MAX AXIAL LOAD RATING (N)	534
PRODUCT TYPE	Mounts
MANUFACTURER	Lord Corporation