

J-20922-22

in Small Industrial Engine Mounts



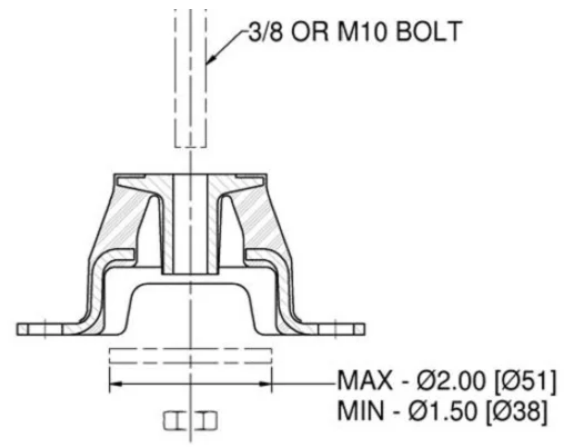
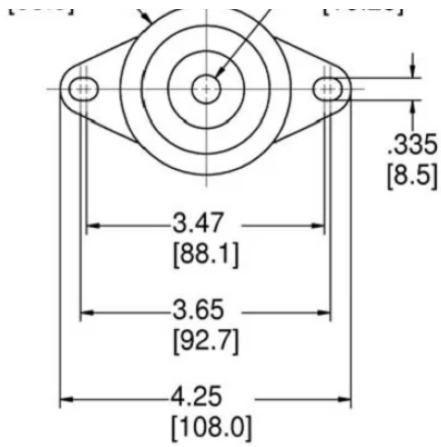
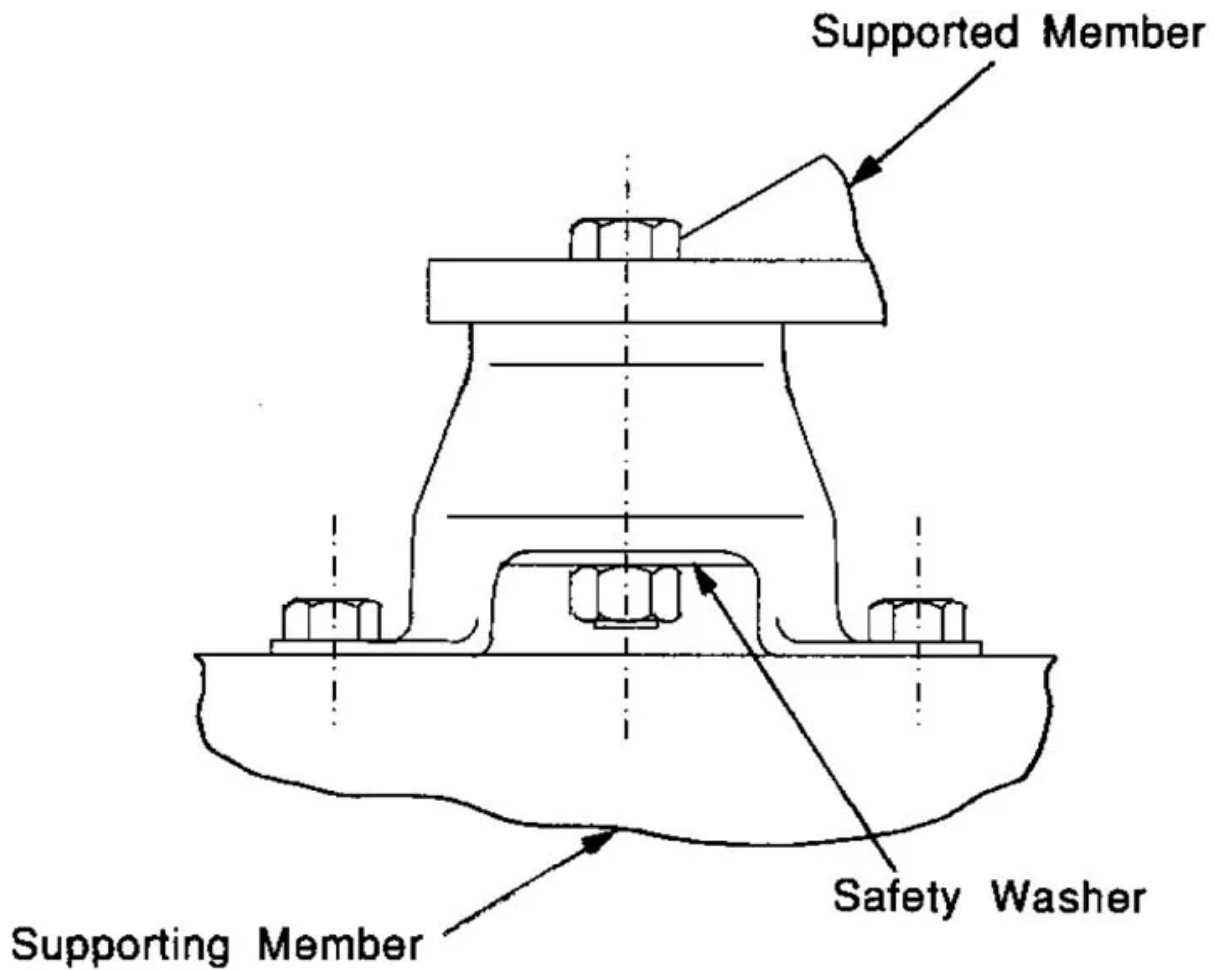
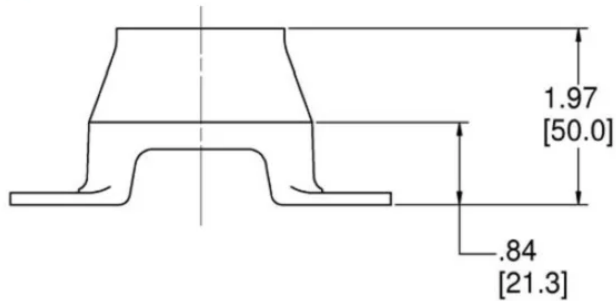


Figure 4 – Dimensions



- Moderately soft vertical stiffness.

- Inter-locked metals (when assembled with washer) provide safety restraint.
- Well-suited for low mounting locations.
- 120 - 300 lb. load ratings.

Lord Corporation's J-20922 series of small engine mounts are especially designed for mounting 2, 3 and 4-cylinder gas or diesel engines in various types of vehicles and equipment.

Specifications

COLOR	Yellow
AXIAL STATIC SPRING RATE (LBS/IN)	1400
AXIAL STATIC SPRING RATE (N/MM)	245
MAX. AXIAL STATIC LOAD RATING AT 0.1 IN (2.5 MM) DEFLECTION (IN)	140
MAX. AXIAL STATIC LOAD RATING AT 0.1 IN (2.5 MM) DEFLECTION (MM)	623
AXIAL SPRING RATES (LBS/IN)	1400
AXIAL SPRING RATES (N/MM)	245
LATERAL SPRING RATES (LBS/IN)	250
LATERAL SPRING RATES (N/MM)	44
COLOR CODE	Yellow
MAX AXIAL LOAD RATING (LBS)	140
MAX AXIAL LOAD RATING (N)	623
PRODUCT TYPE	Mounts
MANUFACTURER	Lord Corporation