

J-20922-23

in Small Industrial Engine Mounts



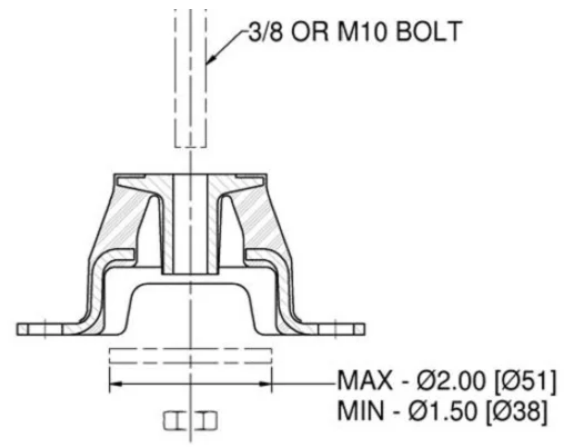
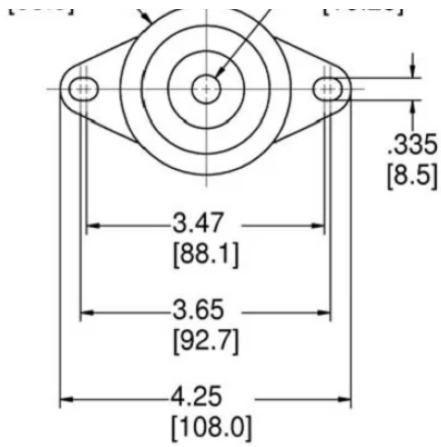
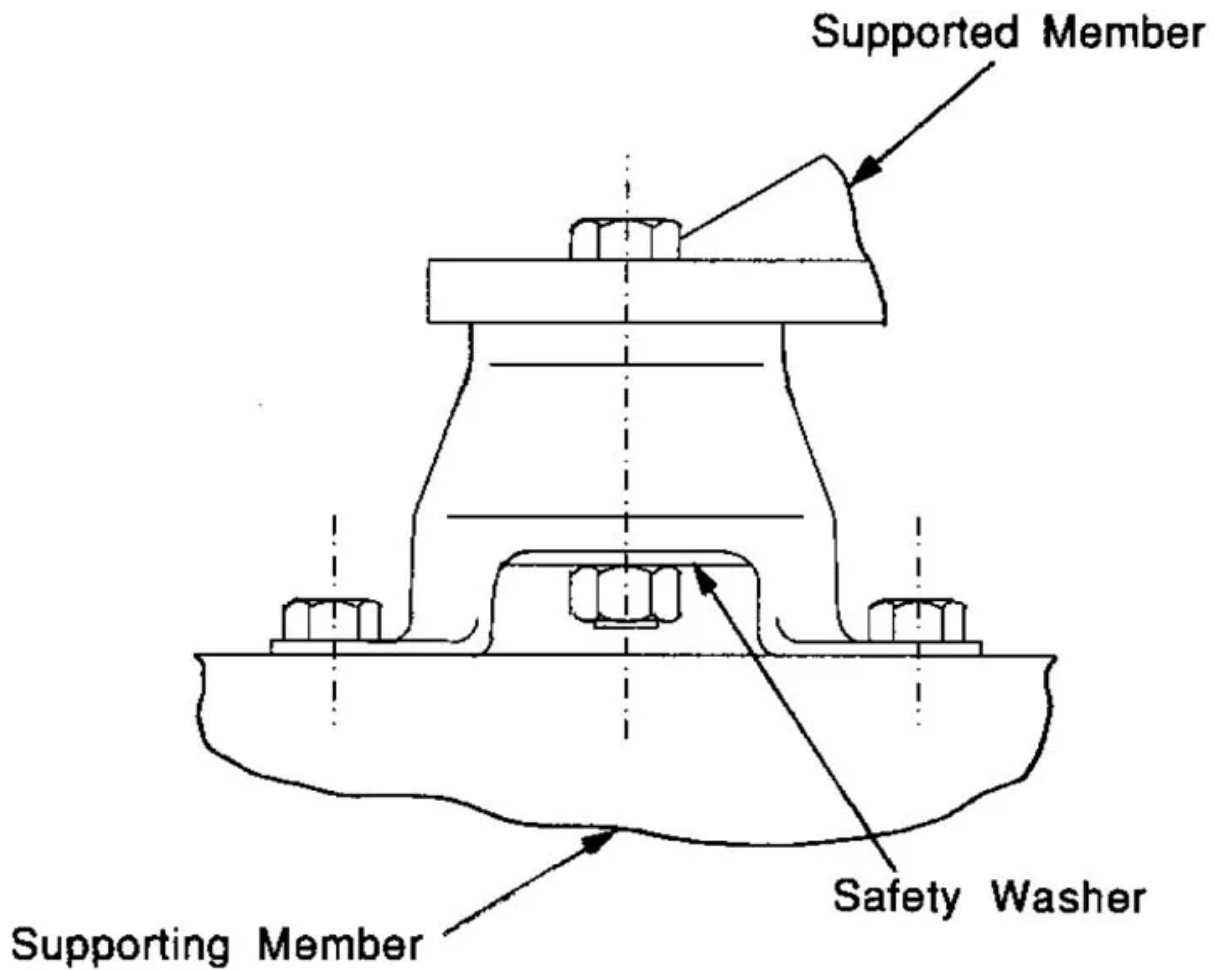
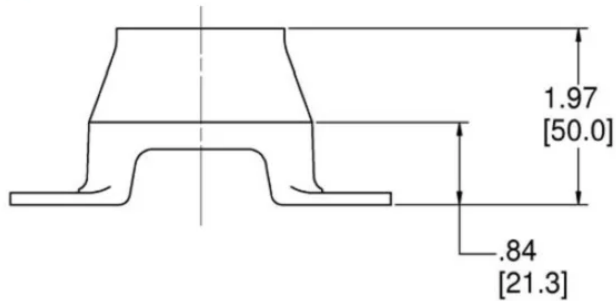


Figure 4 – Dimensions



- Moderately soft vertical stiffness.

- Inter-locked metals (when assembled with washer) provide safety restraint.
- Well-suited for low mounting locations.
- 120 - 300 lb. load ratings.

Lord Corporation's J-20922 series of small engine mounts are especially designed for mounting 2, 3 and 4-cylinder gas or diesel engines in various types of vehicles and equipment.

Specifications

COLOR	Green
AXIAL STATIC SPRING RATE (LBS/IN)	1700
AXIAL STATIC SPRING RATE (N/MM)	300
MAX. AXIAL STATIC LOAD RATING AT 0.1 IN (2.5 MM) DEFLECTION (IN)	170
MAX. AXIAL STATIC LOAD RATING AT 0.1 IN (2.5 MM) DEFLECTION (MM)	756
AXIAL SPRING RATES (LBS/IN)	1700
AXIAL SPRING RATES (N/MM)	300
LATERAL SPRING RATES (LBS/IN)	300
LATERAL SPRING RATES (N/MM)	53
COLOR CODE	Green
MAX AXIAL LOAD RATING (LBS)	170
MAX AXIAL LOAD RATING (N)	756
PRODUCT TYPE	Mounts
MANUFACTURER	Lord Corporation