

J-20922-25

in Small Industrial Engine Mounts



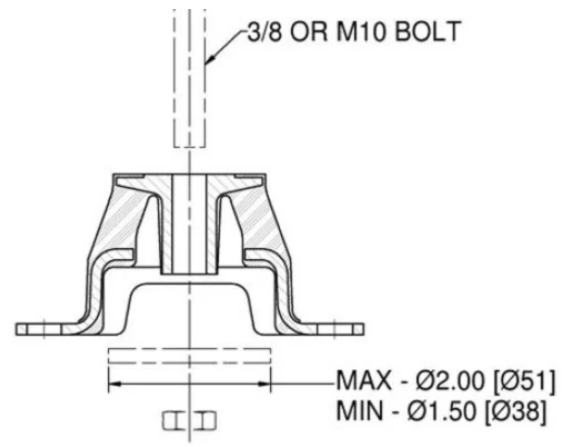
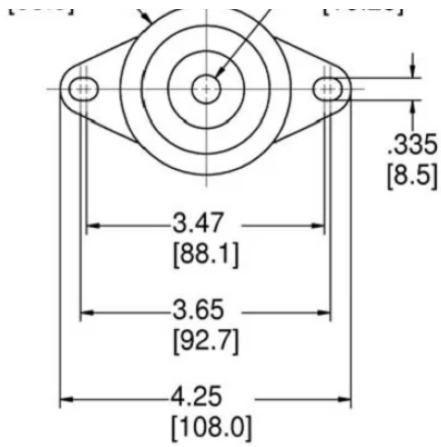
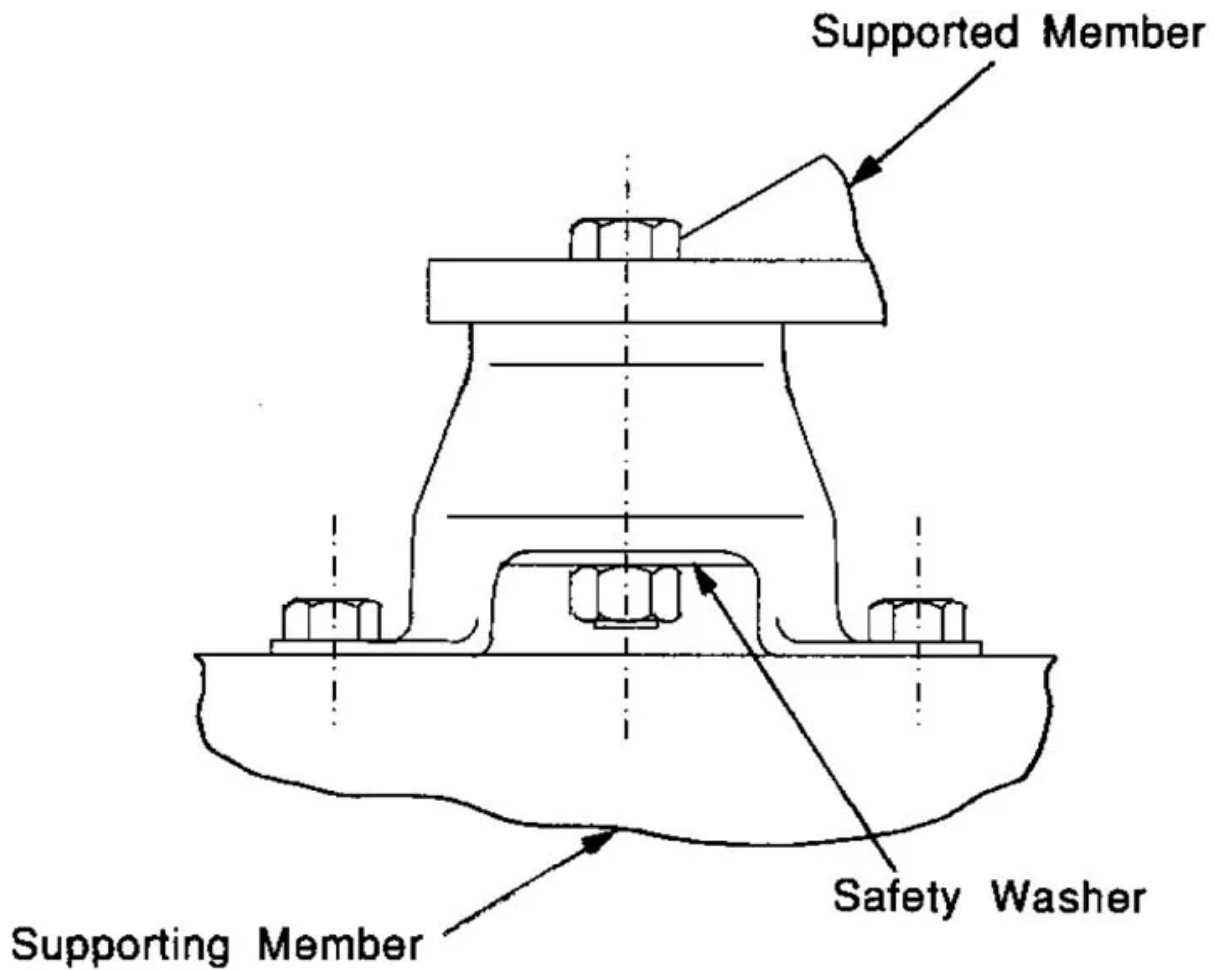
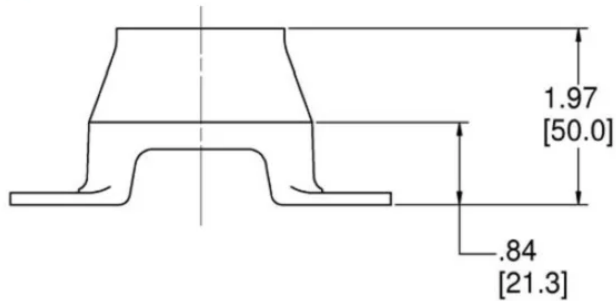


Figure 4 – Dimensions



- Moderately soft vertical stiffness.

- Inter-locked metals (when assembled with washer) provide safety restraint.
- Well-suited for low mounting locations.
- 120 - 300 lb. load ratings.

Lord Corporation's J-20922 series of small engine mounts are especially designed for mounting 2, 3 and 4-cylinder gas or diesel engines in various types of vehicles and equipment.

Specifications

COLOR	Purple
AXIAL STATIC SPRING RATE (LBS/IN)	2500
AXIAL STATIC SPRING RATE (N/MM)	440
MAX. AXIAL STATIC LOAD RATING AT 0.1 IN (2.5 MM) DEFLECTION (IN)	250
MAX. AXIAL STATIC LOAD RATING AT 0.1 IN (2.5 MM) DEFLECTION (MM)	1112
AXIAL SPRING RATES (LBS/IN)	2500
AXIAL SPRING RATES (N/MM)	440
LATERAL SPRING RATES (LBS/IN)	420
LATERAL SPRING RATES (N/MM)	74
COLOR CODE	Purple
MAX AXIAL LOAD RATING (LBS)	250
MAX AXIAL LOAD RATING (N)	1112
PRODUCT TYPE	Mounts
MANUFACTURER	Lord Corporation