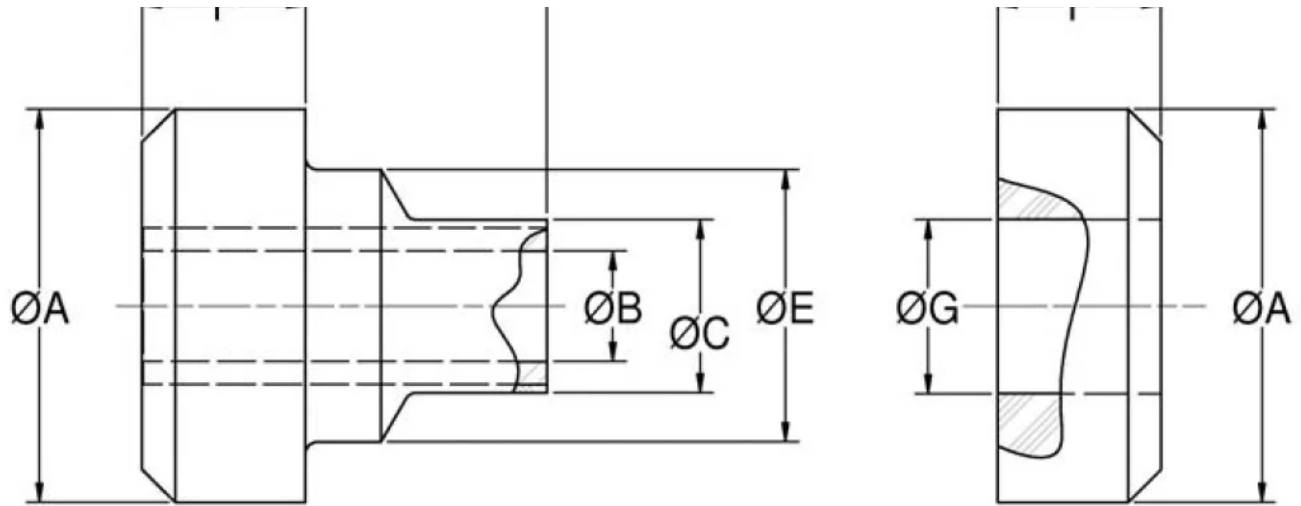


CB-2201-1

in Two-Piece Mounts - CB-2200 Series





Two-Piece Mounts are designed for applications involving severe dynamic forces in the static load direction, as well as the rebound direction. Travel is limited in both directions by rubber in compression which provides snubbing.

These mounts are designed to support engines, cabs and accessory units, accommodate frame racking and twisting while isolating vibration and absorbing shock.

Typical applications for Two-Piece Mounts include on-highway, off-highway vehicles, construction and industrial machines.

Specifications

A (IN)	1.34 1.28
B (IN)	0.407 0.387
C (IN)	0.58
D (IN)	1.28 1.22
E (IN)	0.76 0.82
F (IN)	0.515 0.455
F (MM)	12.3
ELASTOMER	Natural Rubber
INSIDE DIAMETER (IN)	0.391
G (IN)	0.62 0.58

RECOMMENDED BOLT SIZE (IN)	3/8
LOAD/DEFLECTION LBS AT IN (THICK SUPPORT PLATE)	40 at 0.05
THICKNESS (IN)	0.09
THICKNESS (MM)	2.3
PRODUCT TYPE	
MANUFACTURER	
SERIES	CB-2200
R (IN)	0.04
R (MM)	1
APPLICABLE STEEL WASHER	J-2049-89
OUTSIDE DIAMETER (IN)	1.56
OUTSIDE DIAMETER (MM)	39.6
RECOMMENDED BOLT GRADE OR CLASS (SAE J429)	3/8
RECOMMENDED BOLT GRADE OR CLASS (SAE J1199)	5.8
SD (IN)	
SD (MM)	19.1
LOAD/DEFLECTION (THICK SUPPORT PLATE) (IN)	40 at 0.05
LOAD/DEFLECTION (THICK SUPPORT PLATE) (MM)	
THICKNESS - T (THICK SUPPORT PLATE) (IN)	0.375
THICKNESS - T (THICK SUPPORT PLATE) (MM)	9.5

H (THICK SUPPORT PLATE) (IN)	0.44
H (THICK SUPPORT PLATE) (MM)	11.2
H (THIN SUPPORT PLATE) (IN)	0.44
H (THIN SUPPORT PLATE) (MM)	11.2