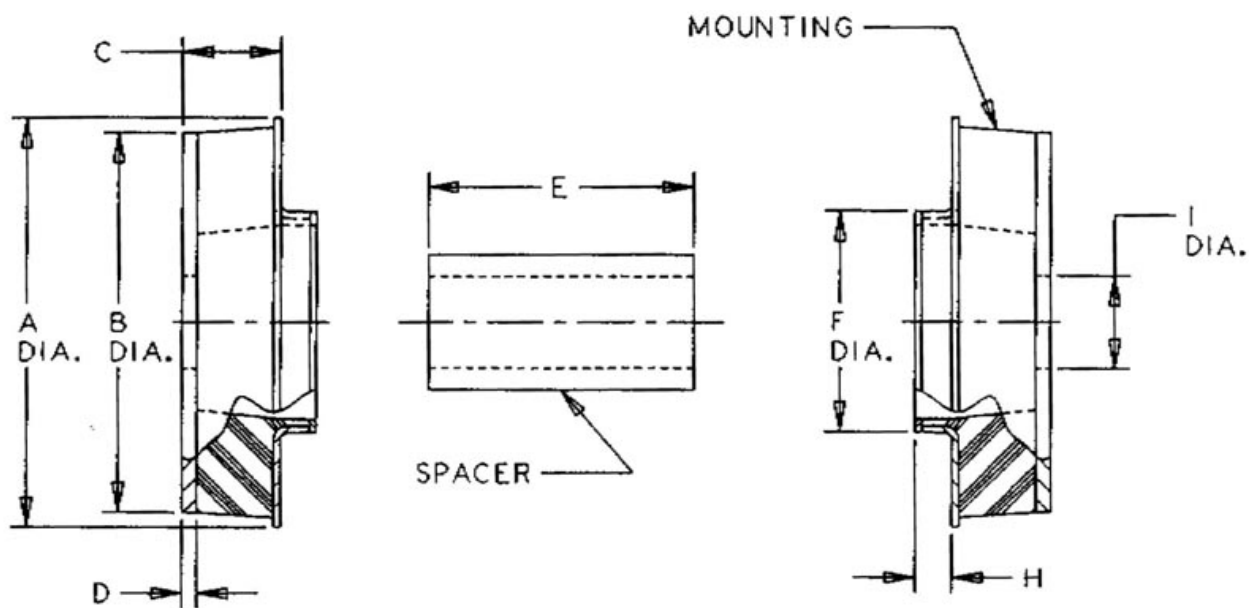


Y-32190-1-1

in Two-Piece Mounts - SSB Series



Two-Piece Mounts are designed for applications involving severe dynamic forces in the static load direction, as well as the rebound direction. Travel is limited in both directions by rubber in compression which provides snubbing.

These mounts are designed to support engines, cabs and accessory units, accommodate frame racking and twisting while isolating vibration and absorbing shock.

Typical applications for Two-Piece Mounts include on-highway, off-highway vehicles, construction and industrial machines.

These loads are for on-highway and general industrial uses. For off-highway, use 80% of the load shown.

- Dynamically effective in all directions.
- Prevent mechanical transmission of noise.
- Accommodate misalignment and distortion.
- High rebound capacity.

- Top and bottom parts alike, cannot be misassembled.
- Fail-safe assembly.
- Sized for English and Metric bolts.
- Long dependable service life.
- Economical.

Specifications

A (IN)	3.24
B (IN)	3.21
C (IN)	0.81
D (IN)	0.125
E (IN)	1.81
F (IN)	1.84
F (MM)	
H (IN)	
H (MM)	
MATERIAL	Low Carbon Steel
AXIAL STATIC SPRING RATE (LBS/IN)	15200 37500
AXIAL STATIC SPRING RATE (N/MM)	2650 6566
I (IN)	0.765
I (MM)	19.4
MAX. AXIAL STATIC LOAD RATING AT DEFLECTION (LBS AT IN)	625 at 0.045 1125 at 0.03
RECOMMENDED BOLT SIZE (IN)	3/4
RADIAL STATIC SPRING RATE (LBS/IN)	2220 3890

K (MM)	52.3
PRODUCT TYPE	Mounts
MANUFACTURER	Lord Corporation
TYPE	Spacer
SERIES	
MAX. AXIAL STATIC LOAD AT DEFLECTION (LBS AT IN)	625 at 0.045 1125 at 0.03
MAX. AXIAL STATIC LOAD AT DEFLECTION (N AT MM)	2780 at 1.15 5005 at 0.76
RECOMMENDED BOLT GRADE OR CLASS (SAE J429)	8
RECOMMENDED BOLT GRADE OR CLASS (SAE J1199)	10.9
SD (IN)	1.87
SD (MM)	47.6
T (IN)	0.625
T (MM)	15.9
MOG P/N	
SPACER P/N	